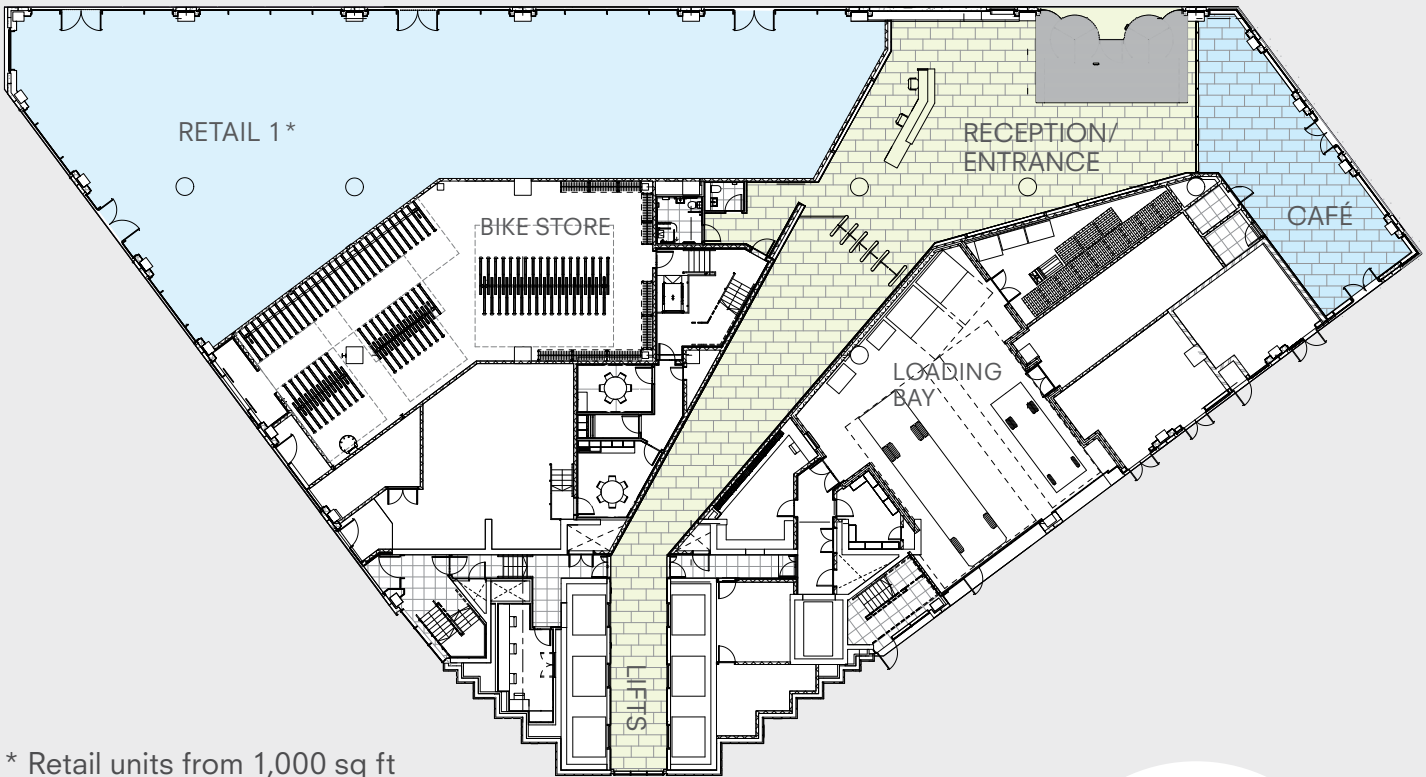


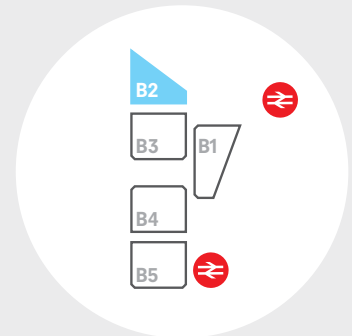
# Building Two Ground

	NIA SQ FT	NIA SQ M	IPMS SQ FT
12 — TERRACE	790		790
12	16,520	1,535	17,880
11	17,350	1,612	17,930
10	17,350	1,612	17,930
9	17,350	1,612	17,930
8	17,335	1,610	17,935
7	17,335	1,610	17,935
6	17,335	1,610	17,935
5	17,320	1,609	17,925
4	17,320	1,609	17,925
3	17,320	1,609	17,925
2	17,310	1,608	17,935
1	17,310	1,608	17,935
G — Retail 1*	5,165	480	5,165
G — Café	915	85	915
<b>TOTAL</b>	<b>213,235</b>	<b>19,810</b>	<b>221,200</b>
<b>TOTAL (OFFICE)</b>	<b>207,155</b>	<b>19,245</b>	<b>215,120</b>



\* Retail units from 1,000 sq ft

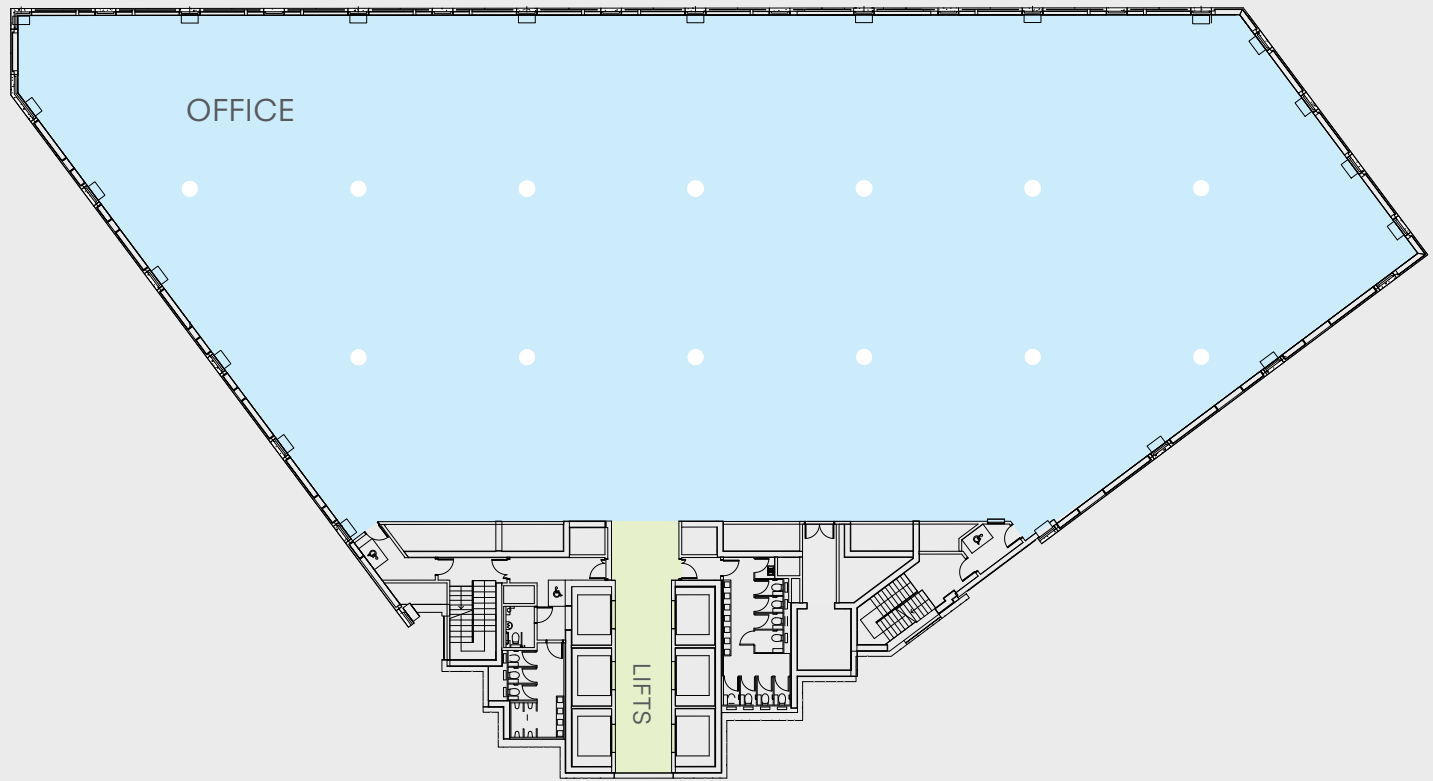
**ruskin  
square**



# Building Two

## Typical upper

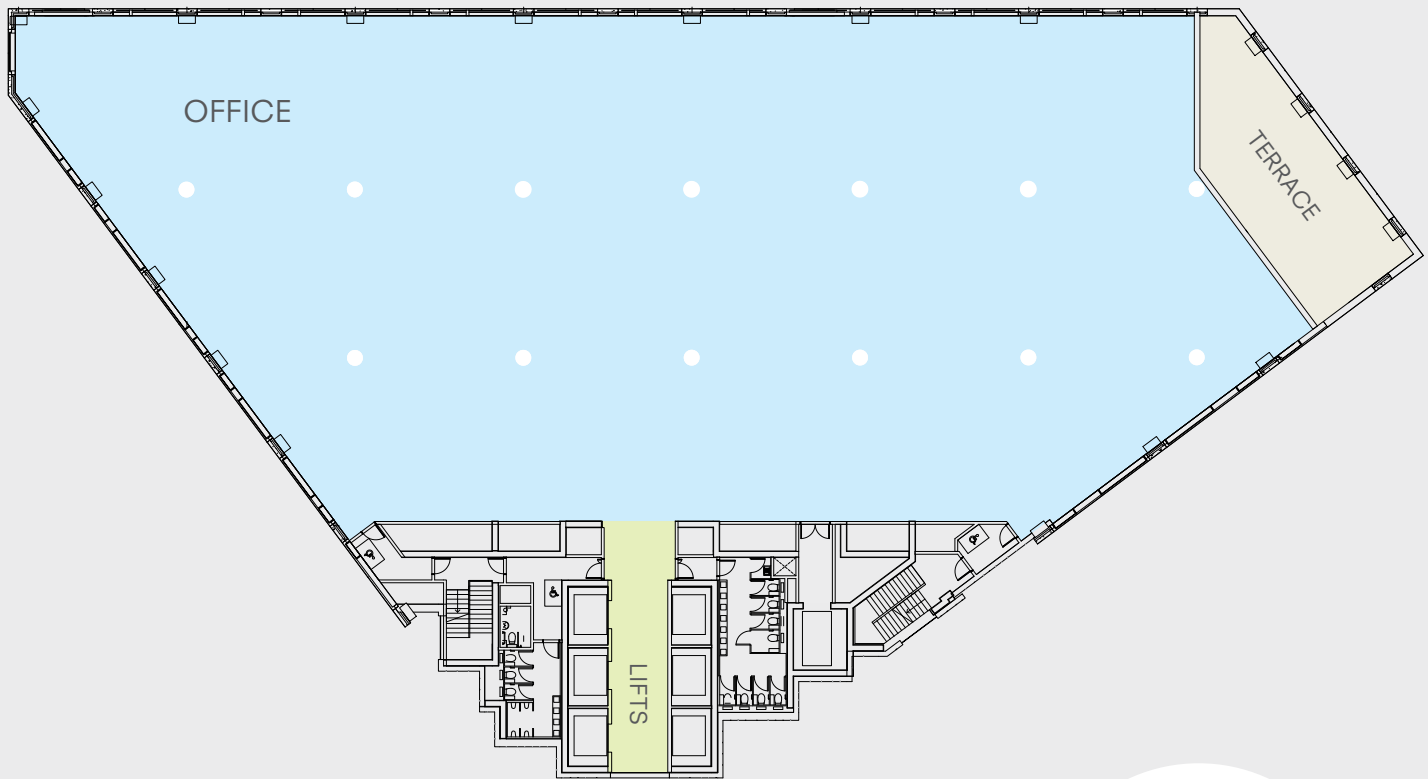
	NIA SQ FT	NIA SQ M	IPMS SQ FT
12 — TERRACE	790		790
12	16,520	1,535	17,880
11	17,350	1,612	17,930
10	17,350	1,612	17,930
9	17,350	1,612	17,930
8	17,335	1,610	17,935
7	17,335	1,610	17,935
6	17,335	1,610	17,935
5	17,320	1,609	17,925
4	17,320	1,609	17,925
3	17,320	1,609	17,925
2	17,310	1,608	17,935
1	17,310	1,608	17,935
G — Retail 1*	5,165	480	5,165
G — Café	915	85	915
<b>TOTAL</b>	<b>213,235</b>	<b>19,810</b>	<b>221,200</b>
<b>TOTAL (OFFICE)</b>	<b>207,155</b>	<b>19,245</b>	<b>215,120</b>



# Building Two

## Twelfth floor and roof terrace

	NIA SQ FT	NIA SQ M	IPMS SQ FT
12 — TERRACE	790		790
12	16,520	1,535	17,880
11	17,350	1,612	17,930
10	17,350	1,612	17,930
9	17,350	1,612	17,930
8	17,335	1,610	17,935
7	17,335	1,610	17,935
6	17,335	1,610	17,935
5	17,320	1,609	17,925
4	17,320	1,609	17,925
3	17,320	1,609	17,925
2	17,310	1,608	17,935
1	17,310	1,608	17,935
G — Retail 1*	5,165	480	5,165
G — Café	915	85	915
<b>TOTAL</b>	<b>213,235</b>	<b>19,810</b>	<b>221,200</b>
<b>TOTAL (OFFICE)</b>	<b>207,155</b>	<b>19,245</b>	<b>215,120</b>



**ruskin  
square**

